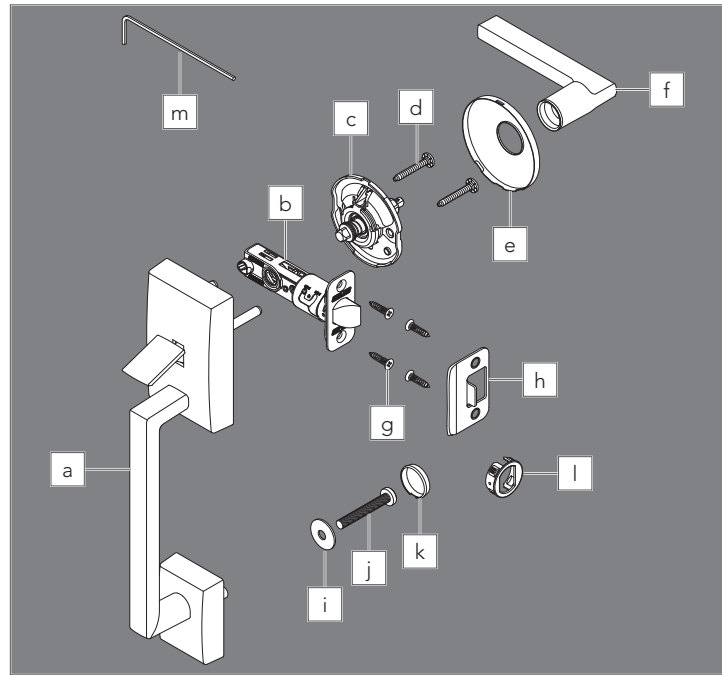




P518-467

Model FC285, Handleset

Installation Instructions



- a. Handle
- b. Latch
- c. Interior chassis
- d. Chassis screws
- e. Trim
- f. Knob/lever
- g. Latch/strike screws
- h. Strike
- i. Washer
- j. Handle bolt
- k. Bolt cover
- l. Drive-in faceplate
- m. Hex wrench (Do not discard!)

1 Check door dimensions.

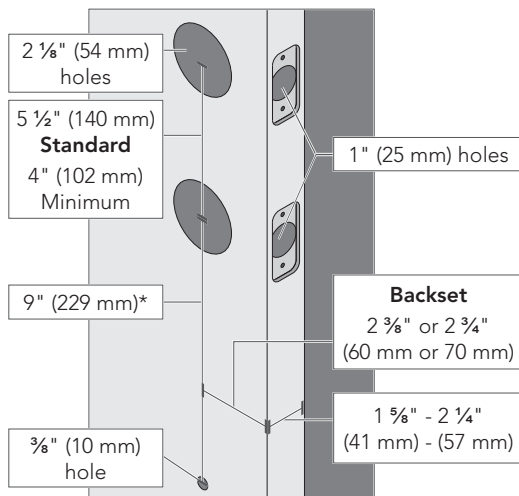
1a If dimensions do not match, you may need to modify your door.

For further assistance, call Customer Service at 1-888-805-9837.

1b Check latch and bolt length. Measure the **backset** as shown.

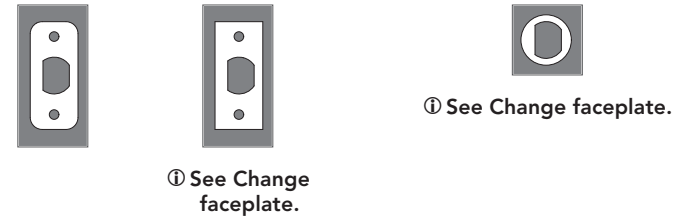
- 2 3/8" (60 mm): no adjustment is necessary.
- 2 3/4" (70 mm): see the **Adjust latch** section.

* May vary from 8 1/4" (210 mm) to 9 3/4" (248 mm) for existing hole.

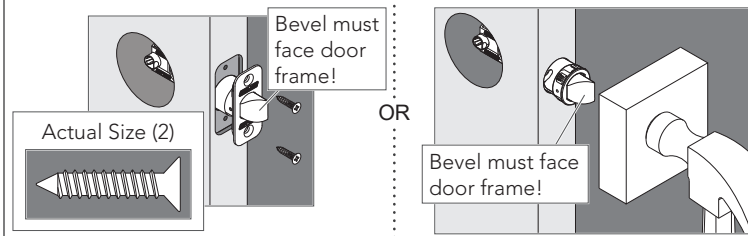


2 Install the latch.

2a Choose the faceplate.



2b Secure with screws.

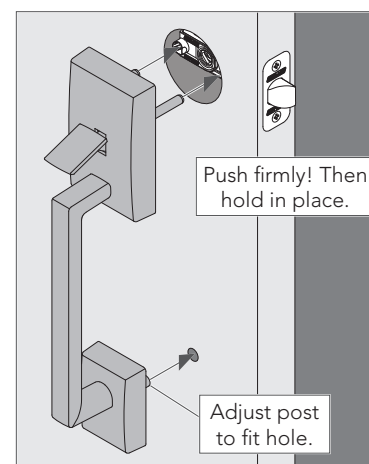


3 Install the strike onto the door frame.

Use included strike for best performance.

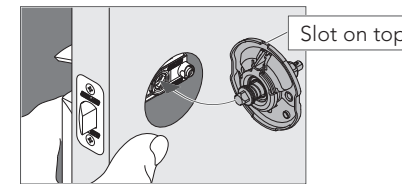


4 Install the handle.



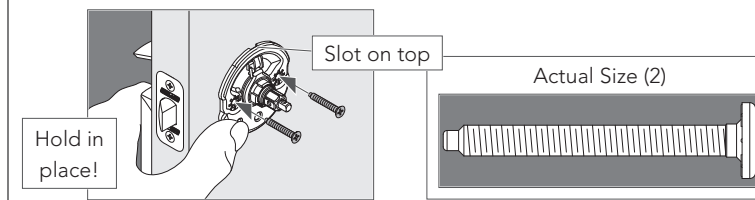
5 Install the interior chassis.

5a Chassis is spring-loaded. Push against door and hold in place.

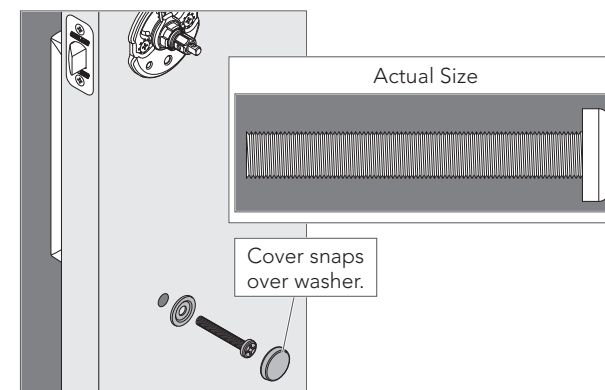


5b Secure with two (2) screws.

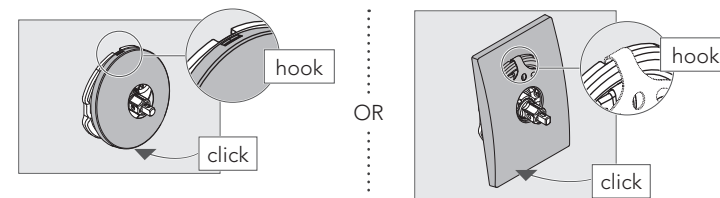
Make sure chassis is straight!



6 Install the handle bolt.

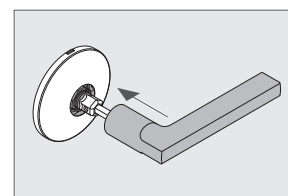


7 Install the interior trim.

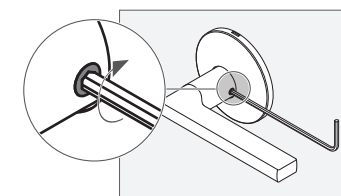


8 Install the interior knob/lever.

8a Push knob/lever firmly into place.

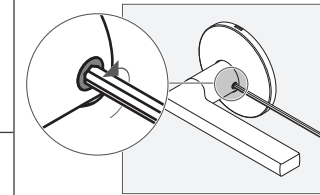


8b Then tighten set screw.

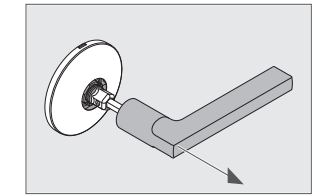


Change levers

1. Loosen set screw, but do not remove.



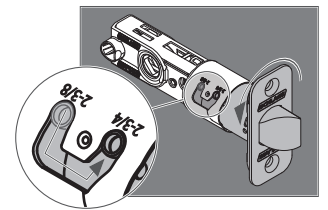
2. Pull lever off.



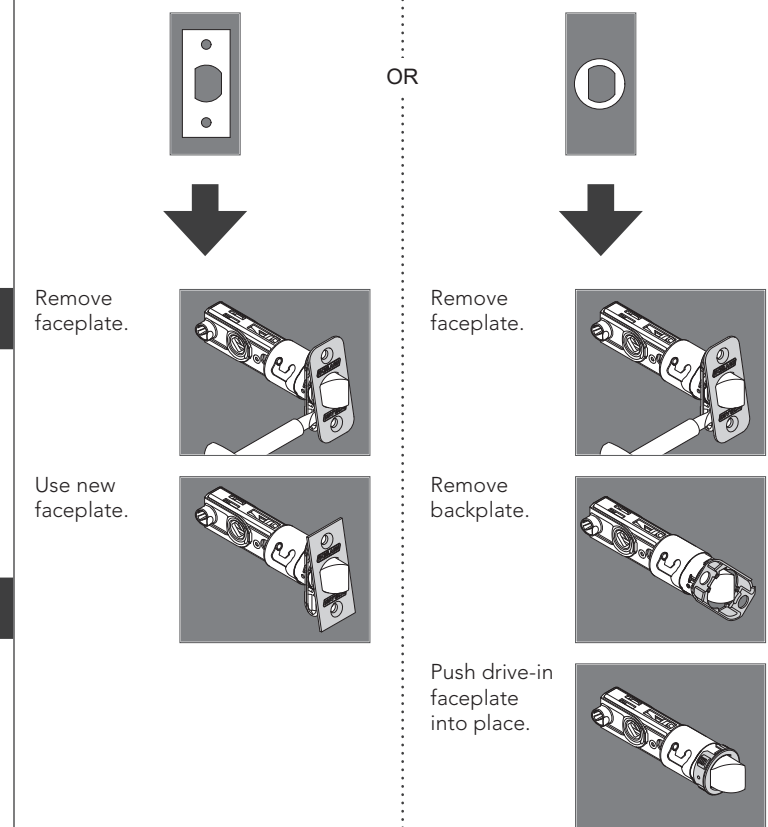
3. Reinstall appropriately. Then tighten set screw.

Adjust latch

For 2 3/4" backset, rotate and pull latch/bolt out to long setting.



Change faceplate



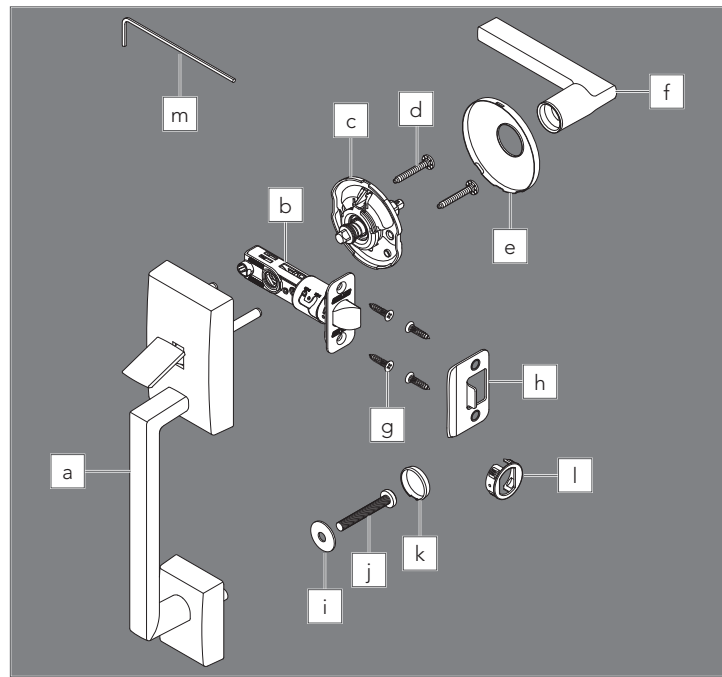
Customer Service

(888) 805-9837

www.schlage.com

Juego de manijas Modelo FC285

Instrucciones de instalación



- a. Manija
- b. Pestillo
- c. Chasis interior
- d. Tornillos del chasis
- e. Moldura
- f. Pomo/manija
- g. Tornillos del pestillo/batiente
- h. Batiente
- i. Arandela
- j. Perno de la manija
- k. Cubierta del perno
- l. Placa frontal de inserción
- m. Llave hexagonal (¡no desechar!)

1 Verifique las dimensiones de la puerta.

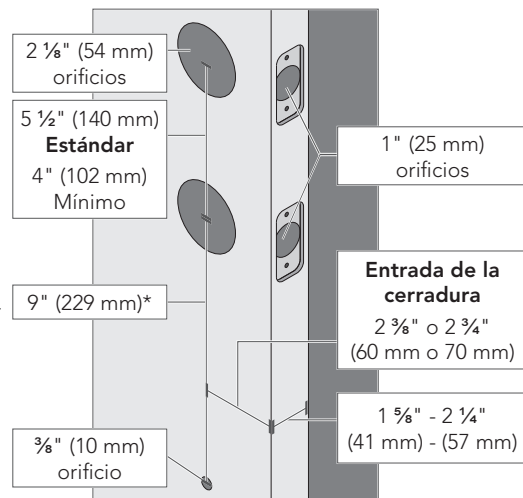
Si las dimensiones no concuerdan, es posible que tenga que modificar su puerta.

En caso de necesitar asistencia, póngase en contacto con Servicio al Cliente a 1-888-805-9837.

1a Verifique el largo del pestillo y del perno. Mida la **entrada de la cerradura** tal como se muestra.

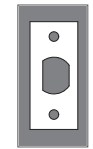
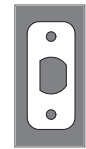
- 2 3/8" (60 mm): no hace falta ajustar.
- 2 3/4" (70 mm): Consulte la sección de **Ajustar pestillo**.

* Puede variar de 8 1/4" (210 mm) a 9 3/4" (248 mm) para el agujero existente.



2 Instale el pestillo.

2a Seleccione la placa frontal.



① Consulte la sección **Cambiar placa frontal**.

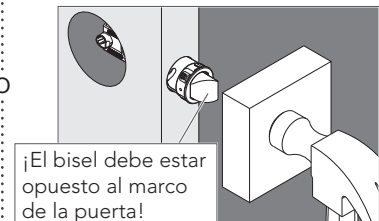


① Consulte la sección **Cambiar placa frontal**.

2b Sujete con los tornillos.

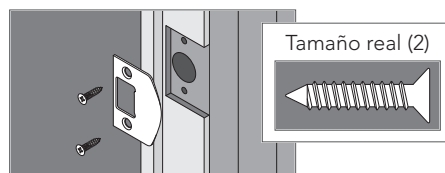


2b Utilice un bloque de madera y un martillo.

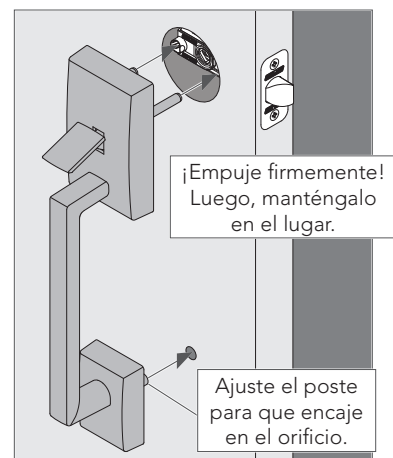


3 Instalar el batiente en el marco de la puerta.

① Utilice el batiente incluido para obtener el mejor desempeño.

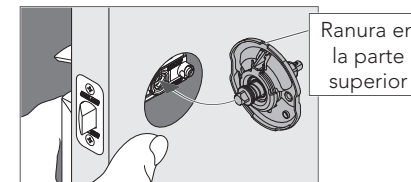


4 Instale la manija.



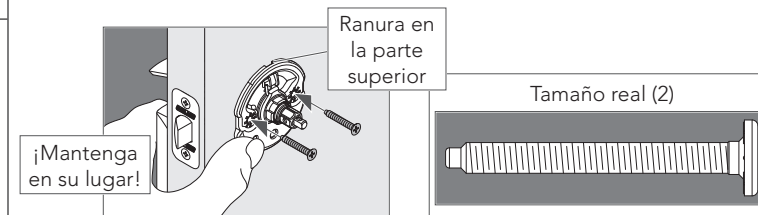
5 Instale el chasis interior.

5a El chasis se acciona mediante resorte. Empuje contra la puerta y manténgalo en su lugar.

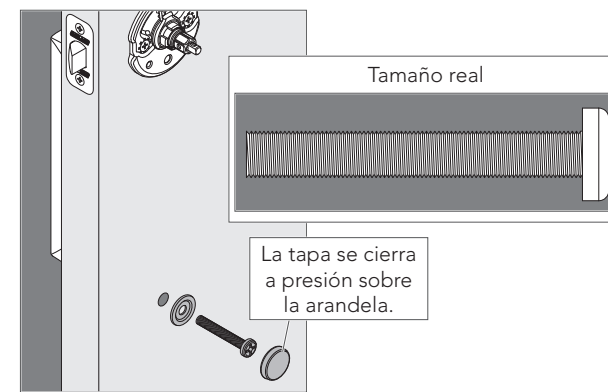


5b Fije con dos (2) tornillos.

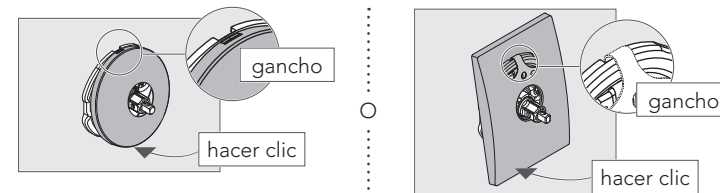
① ¡Asegúrese de que el chasis esté recto!



6 Instale el perno de la manija.

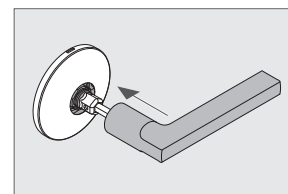


7 Instale la moldura interior.

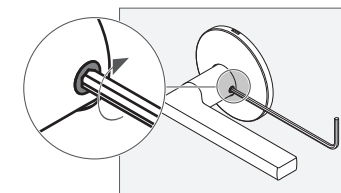


8 Instale la perilla/manija interior.

8a Empuje la perilla/manija firmemente para ubicarlas en su lugar.

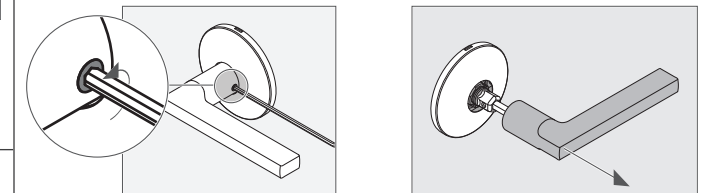


8b Luego, apriete el tornillo de fijación.



Cambio de manijas

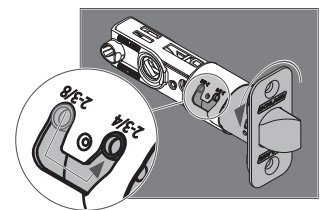
1. Afloje el tornillo de fijación, pero no lo quite. 2. Tire de la manija para retirarla.



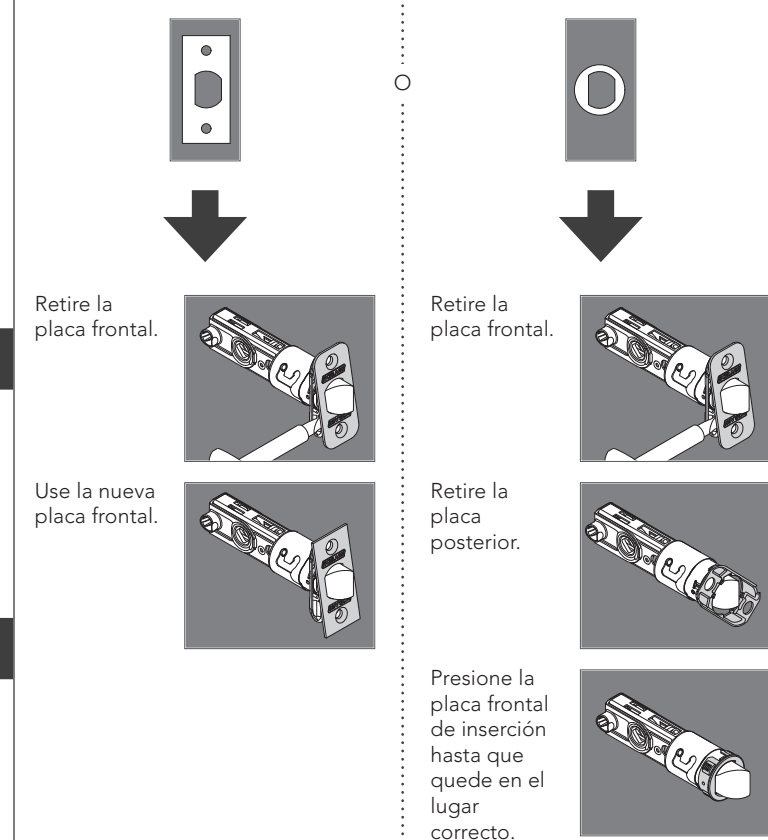
3. Vuelva a instalar correctamente. Luego, apriete el tornillo de fijación.

Ajuste el pestillo

Para un conjunto trasero de 2 3/4" (69 mm) de espesor, gire y tire del pestillo/perno hacia fuera hasta un ajuste largo.



Cambie la placa frontal



Service à la clientèle

1-888-805-9837

www.schlage.com